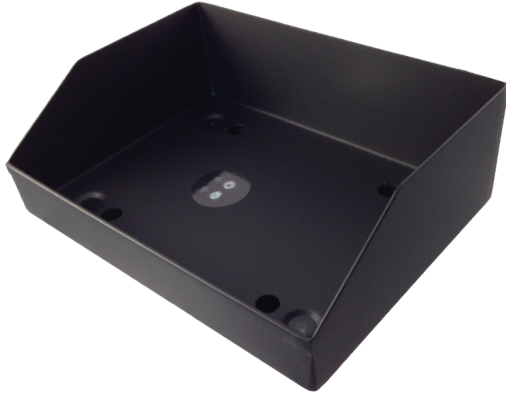




# W140 9kg Scale



The **W140 Scale** features precision thin-film strain gauge technology, rugged construction, splash resistance, RF immunity, overload protection, and unlimited color and material selection. Rugged medical reagent/waste scale with overload protection from side loads, tension, and compression. The scale features a thin-film load cell that is center balanced and has long term stability specification of better than 0.1% per year.

## Product Specifications:

Maximum Capacity:	9Kg
Maximum Used Load:	8.4Kg
Total Height:	.59"
Size (Footprint of Baseplate):	7.75x5.63"
Min. Zero Offset w/Platform:	0.2 mV
Max. Output @ Max. Used Load:	19.8 mV
Excitation Voltage:	10 V
Load Sensing Element:	Strain Gage Bending Beam
Bridge Resistance:	1,000Ω or 5,000Ω
Operating Temperature Range:	15 to 34°C
Ambient RH Range:	90%
Max. Machine Tilt:	2°
Accuracy:	± 5 grams
Distance from Center Edge:	± 5 grams
Overload:	150% Full Scale or Better
Linearity:	± 5 grams
Hysteresis:	± 5 grams
Repeatability:	± 5 grams
Creep:	± 5 grams
Corner Balance:	9 mV when Powered @ 1/2 Scale @10V Excitation

## Features:

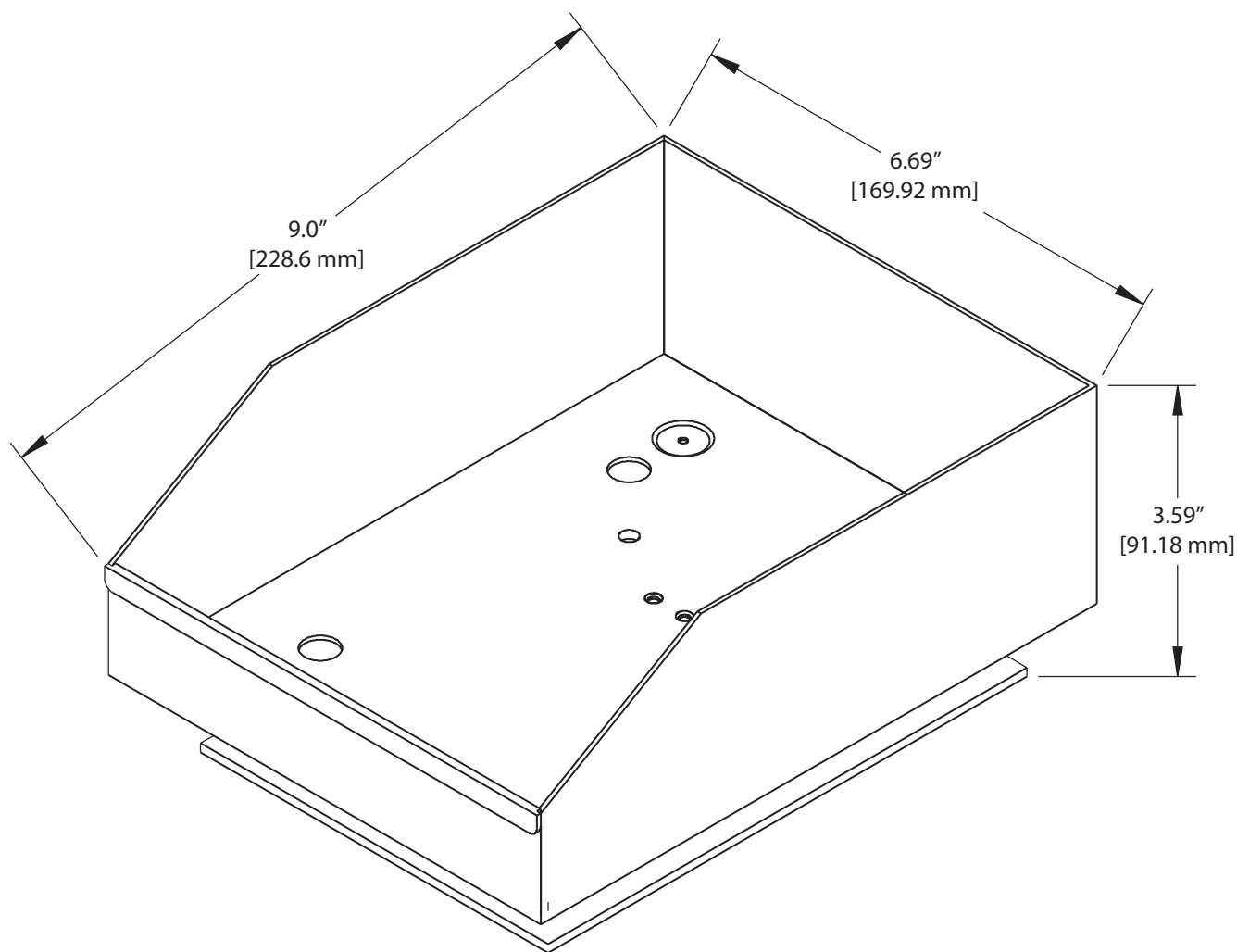
- Custom Platforms Available
- RoHs Scales Available Upon Request

## Applications:

- Medical
- Reagent
- Waste



# STRAIN MEASUREMENT DEVICES



USA  
Strain Measurement Devices  
55 Barnes Park North, Wallingford, CT 06492  
[sales@smdsensors.com](mailto:sales@smdsensors.com) | (203) 294-5800

Europe  
Strain Measurement Devices  
Bury Road, Chedburgh, Bury St Edmunds IP29 4UQ  
[sales@smdsensors.co.uk](mailto:sales@smdsensors.co.uk) | +44 (0)1284 852 000

[www.smdsensors.com](http://www.smdsensors.com)