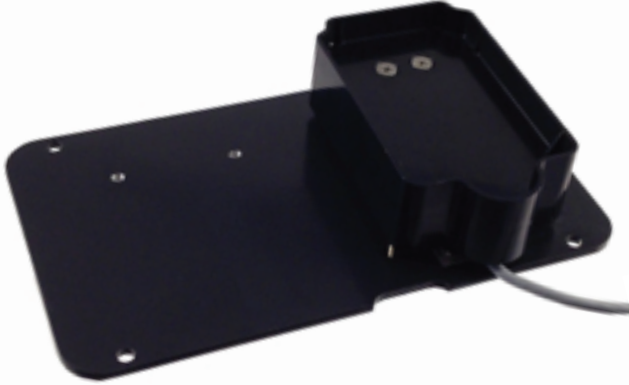




W100 0.45kg Scale



The **W100 Scale** features precision thin-film stain gauge technology, rugged construction, splash resistance, RF immunity, overload protection, and unlimited color and material selection. Rugged medical reagent/waste scale with overload protection from side loads, tension, and compression. The scale features a thin-film load cell that is center balanced and has a long term stability specification of better than 0.1% per year.

Product Specifications:

Maximum Used Load:	0.45 Kg
Total Height:	1.45"
Size (Footprint of Baseplate):	3.88x6.81"
Min. Zero Offset w/Platform:	0.2 mV
Max. Output @ Max. Used Load:	19.8 mV
Min. Working Output Span:	9 mV (0.22 m V/gram)
Excitation Voltage:	10 V
Load Sensing Element:	Strain Gage Bending Beam
Bridge Resistance:	1,000 Ω or 5,000 Ω
Operating Temperature Range:	15 to 34°F, -10 to 70°C
Ambient RH Range:	10-90%
Max. Machine Tilt:	2°
Accuracy:	30 grams, off center loading 1/2 capacity @1/2
Distance from Center Edge:	150% Full Scale or Better
Overload:	0.150 grams
Linearity:	0.150 grams
Hysteresis:	0.150 grams
Repeatability:	0.150 grams
Creep:	0.18 grams in 1 minute
Corner Balance:	9 mV when Powered @ 1/2 Scale @10V Excitation

Features:

- Custom Platforms Available
- RoHs Scales Available Upon Request

Applications:

- Medical
- Reagent
- Waste

