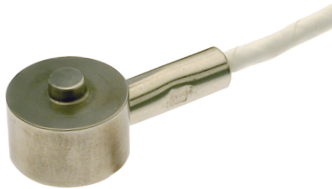




S400 Button Load Cell



The Series 400 Range of Button Load Cells were designed for force measurement applications where space is at a premium. Constructed from 17-4PH stainless steel, these devices are available in full scale capacities from 50lb to 1000lb and come complete with custom-length shielded cable.

Product Specification:

Ranges lbs-Force:	50, 100, 250, 500, 1000
Full Scale Output:	2 mV/V Nominal
Maxium Load:	150% of Full Scale
Temp. Effect on Zero:	+0.038% FSO/°C (.005% FSO/°C Available)
Temp. Effect on Span:	+0.025% Reading/°C (.0016%/°C Available)
Operating Temperature:	-15 to 85°C [up to 204°C (400°F) Available]
Excitation Voltage (Recommended):	10 Vdc (15 Vdc Max)
Bridge Configuration:	Full Bridge
Bridge Resistance:	350 Ω
Zero Balance:	+2% FSO
Nonlinearity:	+0.1% FSO
Hysteresis:	+0.05% FSO
Nonrepeatability:	+0.03% FSO
Body Material:	17-4 PH Stainless Steel
Cable Length (Standrd):	24"
Cable Type:	4 Conductor, Shielded, Drain Wire (Teflon® and Custom Jacketed Cables Available)

Features:

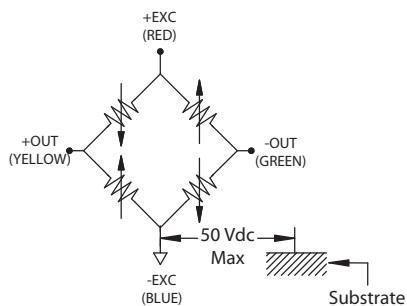
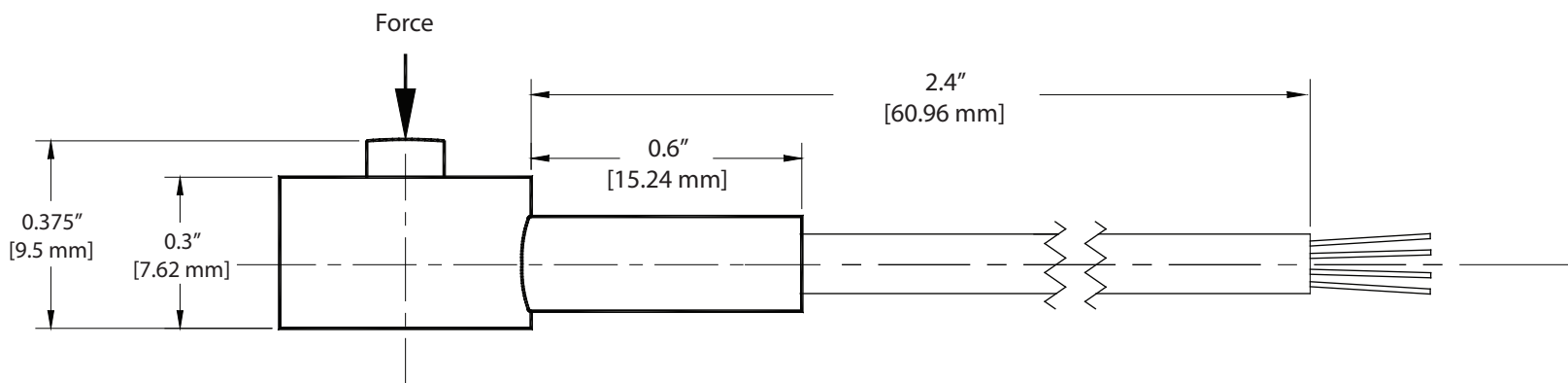
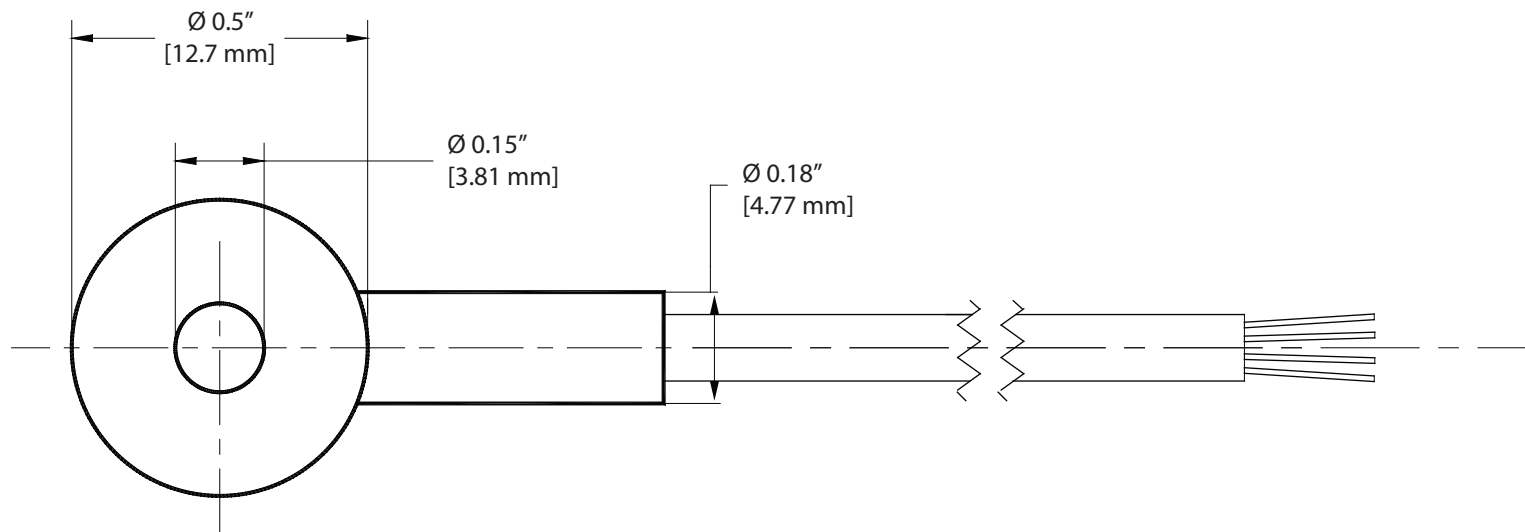
- Low Profile
- Stainless Steel
- Low Power Consumption
- Long Term Stability
- Low Hysteresis
- Economical

Applications:

- Orthopedic Instruments
- Process Control
- Hydraulics Force Control
- Press Tool
- Printing



STRAIN MEASUREMENT DEVICES



Part Name	Description
SMD2094-050	50 lb [23.0 kg]
SMD2094-100	100 lb [45.0 kg]
SMD2094-250	250 lb [113 kg]
SMD2094-500	500 lb [227 kg]
SMD2094-1000	1000 lb [454 kg]

USA
Strain Measurement Devices
55 Barnes Park North, Wallingford, CT 06492
sales@smdsensors.com | (203) 294-5800

Europe
Strain Measurement Devices
Bury Road, Chedburgh, Bury St Edmunds IP29 4UQ
sales@smdsensors.co.uk | +44 (0)1284 852 000

www.smdsensors.com