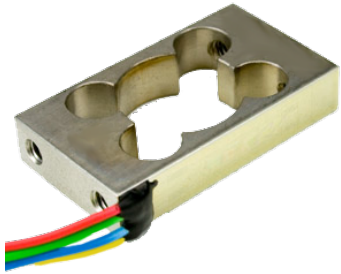


# S251 & S252 Miniature Platform Load Cell



The S251 and S252 Miniature Platform Load Cells are low profile, single point OEM sensors offering high accuracy. Only 0.71" high, they are ideal for medical instruments, low profile scales and other low profile, high resolution applications. A 3,000 ohm thin film strain gauge bridge provides extremely low power consumption for battery and current loop applications. Capacities range from 200g to 10kg-force full scale (0.4 to 22lb-force). These two load cells are the same except the S252 has holes on it's face and on it's end and the S251 has holes on it's end only.

## Product Specifications:

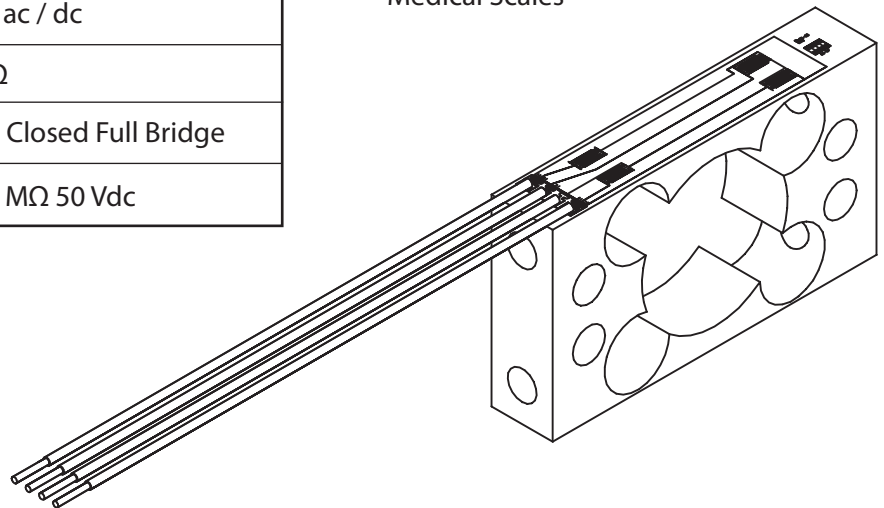
<b>Hysteresis:</b>	< 0.05% R.O.
<b>Repeatability:</b>	< 0.03% R.O.
<b>Creep (30 mins):</b>	< 0.05% R.O.
<b>Nonlinearity:</b>	1 kg & Below <0.05% R.O. 2 kg & Above <0.03% R.O.
<b>Overload Limit:</b>	150% Full Scale Capacity
<b>Temp. Effect on Zero Balance:</b>	0.03% R.O./°C
<b>Temp. Effect on Span:</b>	0.025% Reading/°C
<b>Rated Output:</b>	2 mV/V Nominal
<b>Excitation (Recommended):</b>	5-20 V ac / dc
<b>Bridge Resistance:</b>	3000 Ω
<b>Bridge Configuration:</b>	4-Wire Closed Full Bridge
<b>Insulation Resistance:</b>	>1000 MΩ 50 Vdc

## Features:

- Low Profile
- Low Power Consumption
- Low Hysteresis
- Long Term Stability
- Economical

## Applications:

- Medical Instruments
- Postal Scales
- Counting Scales
- Check Weighing
- Medical Scales

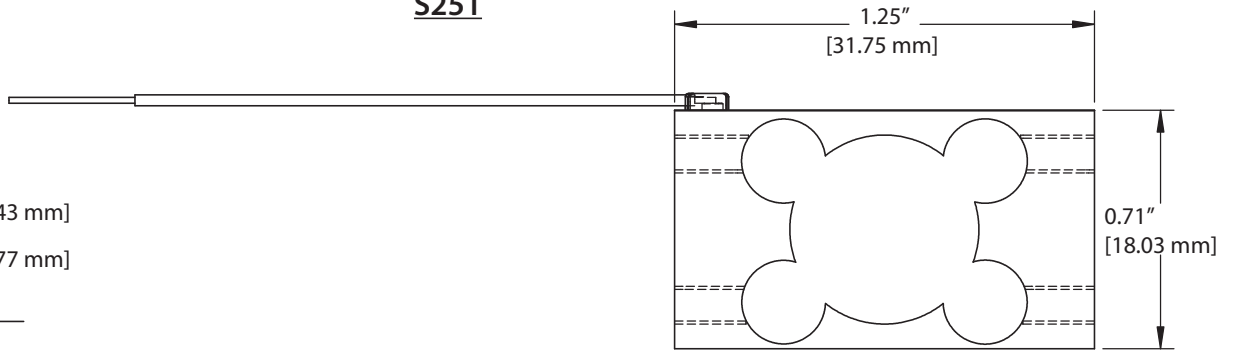
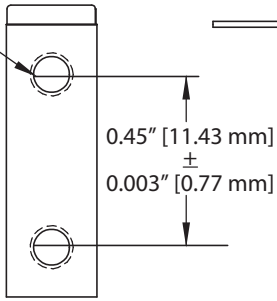




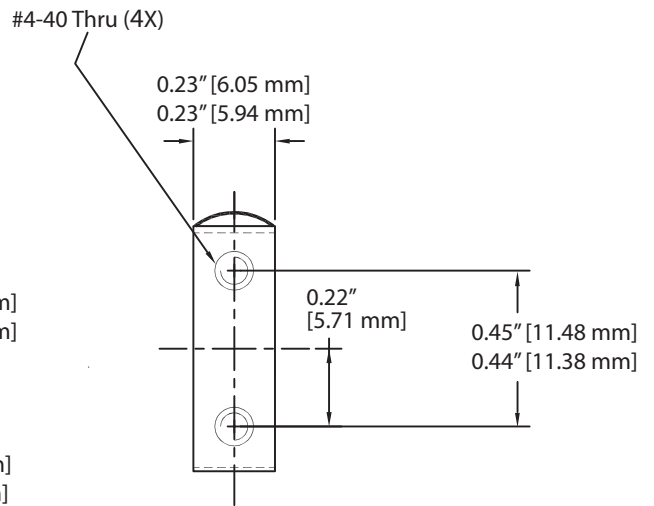
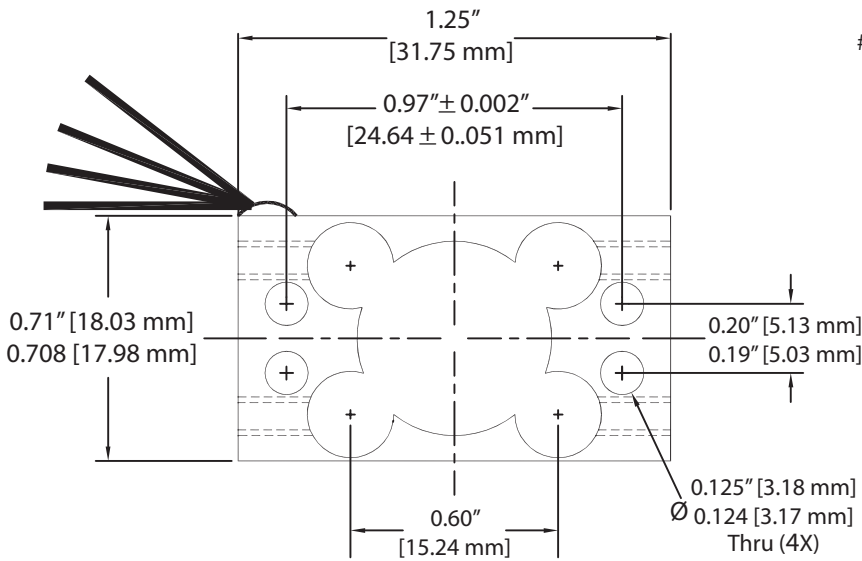
# STRAIN MEASUREMENT DEVICES

4x 4-40 UNC-2B  
or M3 x 0.5  
(M4 x 0.7 - 50 kg Only)

## S251



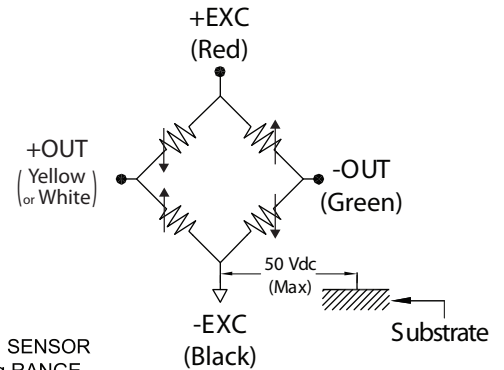
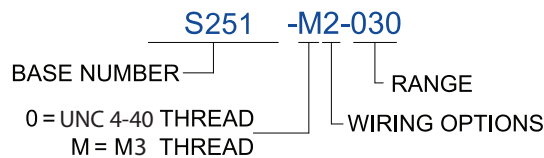
## S252



Part Name	Rated Capacity	Deflection at Full Scale Load
S251-XX-002	S252-XX-002	0.40 lb [0.20 kg]
S251-XX-006	S252-XX-006	1.3 lb [0.60 kg]
S251-XX-010	S252-XX-010	2.2 lb [1.0 kg]
S251-XX-020	S252-XX-020	4.5 lb [2.0 kg]
S251-XX-030	-	6.6 lb [3.0 kg]
S251-XX-050	S252-XX-050	11 lb [5.0 kg]
S251-XX-100	S252-XX-100	22 lb [10.0 kg]

Wiring Options	
1	4 Wire 28 AWG PVC (11.5 IN LG)
2	Cable, Ø 0.13 OD, Shielded (35 IN LG)
3	Coiled Cable, BRIM 170/4-1
4	Teflon Wires / PTFE 32 AWG
5	Custom Cable / Wire Option

**PART NUMBER EXAMPLE:** STAINLESS STEEL S251 SENSOR WITH METRIC THREADS, SHIELDED CABLE, AND A 3 kg RANGE.



**USA:** Strain Measurement Devices  
55 Barnes Park North, Wallingford, CT 06492  
sales@smdsensors.com | (203) 294-5800

**Europe:** Strain Measurement Devices  
Bury Road, Chedburgh, Bury St Edmunds IP29 4UQ  
sales@smdsensors.co.uk | +44 (0)1284 852 000