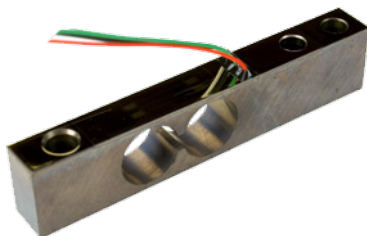




S230 Single Point, Low Profile Load Cell



The **S230 Low Profile Single Point Load Cell** is intended for applications requiring accurate measurement of forces up to 40 pounds-force. It can be used with a rigidly mounted platform or to measure tensile or compressive forces. A 10,000 Ω Wheatstone bridge offers extremely low power consumption for extended battery life in portable products. Its thin-film metal strain gauge circuit enables a long-term stability of better than 0.1% per year. Options on various specifications and mounting configurations are available.

Product Specifications:

Capacity:	20 & 40 lb [9 & 18 kg]
Hysteresis:	0.03% R.O.
Non Repeatability:	0.01% R.O.
Creep (20 mins):	0.02% R.O.
Nonlinearity:	0.03% R.O.
Temperature Range:	-40°C to 150°C
Temp. Effect on Zero Balance:	0.03% R.O./°C
Temp. Effect on Span:	0.03% Reading/°C
Rated Output:	2 mV/V Nominal
Zero Offset:	0.3 mV/V
Excitation (Recommended):	200% R.O.
Bridge Resistance:	10000 Ω
Bridge Configuration:	4-Wire Closed Bridge
Insulation Resistance:	>1000 M Ω 50 Vdc
Long Term Stability:	< 0.01% R.O. / Year

Features:

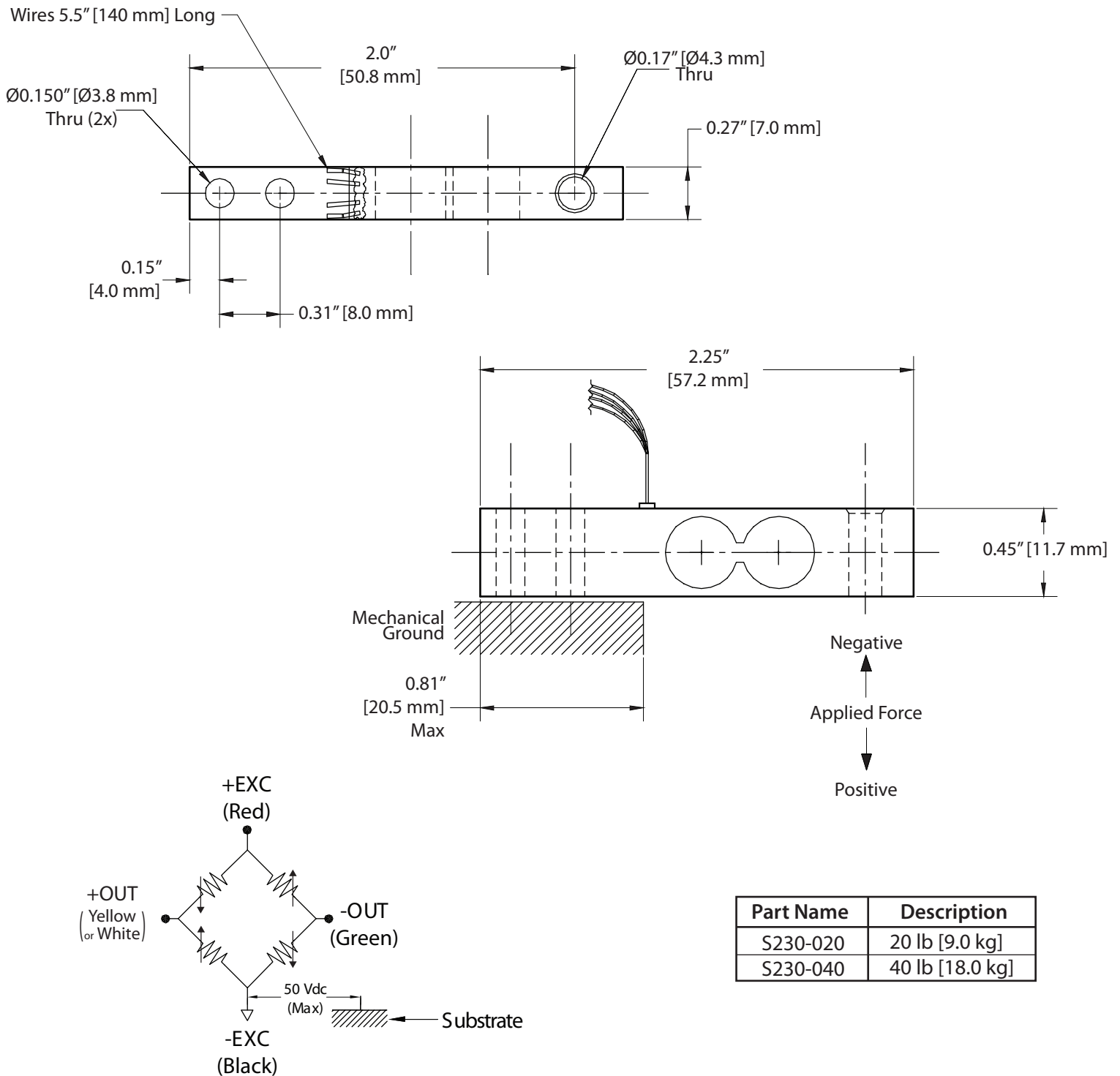
- Low Profile
- Single Point (Platform)
- Low Power Consumption
- Low Hysteresis
- Long Term Stability
- Economical

Applications:

- Medical Instrumentation
- Scales
- Laboratory Use
- Force Measurements
- Robotics



STRAIN MEASUREMENT DEVICES



USA
Strain Measurement Devices
55 Barnes Park North, Wallingford, CT 06492
sales@smdsensors.com | (203) 294-5800

Europe
Strain Measurement Devices
Bury Road, Chedburgh, Bury St Edmunds IP29 4UQ
sales@smdsensors.co.uk | +44 (0)1284 852 000