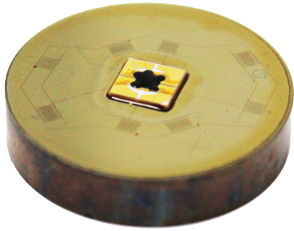




P940 Thin Film Pressure Diaphragm



The Series **940 Pressure Sensor** is a stainless-steel wetted surface pressure diaphragm with a proprietary sputtered thin-film full-bridge strain gauge circuit. The sputtered metal strain gauge circuit offers superior long term stability and higher temperature capability than other strain gauge technologies. A unique lead out pad design provides ease of soldering and rugged construction. The 10K ohm bridge offers low power consumption for transmitters. Ideal for pressure transducer OEMs.

Product Specifications:

Capacity (psi):	30, 50, 100, 150, 200, 300, 500, 1000, 1500, 2000, 2500, 3000, 35000, 6000 psi
Rated Output (R.O.):	2.0 mV
Excitation:	5-20 Vdc
Bridge Configuration:	Full Bridge, 4 Wire Closed
Bridge Resistance:	10,000Ω ±2%
Insulation Resistance:	1,000MΩ @ 50Vdc
Over Pressure Limit, Proof:	150% of Range
Repeatability:	<0.03% Span
Long Term Stability:	<0.8% Span per year
Temp. Effect on Zero Balance:	<0.03% Span/ °C
Temp. Effect on Span:	+0.025% Reading/ °C
Operating Temp. Range:	-40°C (-40°F) to 150°C (302°F)
Calibrated Temp. Range:	-20°C (-4°F) to 125°C (257°F)
Electrical Termination:	Gold Solder Pads on Ceramic Substrate
Wetted Material Sensor:	15-5PH Vac CE Stainless Steel Cond. H900
Sensor Optional:	Hastelloy®
Fitting:	Stainless Steel

Features:

- Stainless Steel Wetted Surface
- Low Power Consumption
- Unsurpassed Stability
- Gold Contact Stability
- Rugged Construction

Applications:

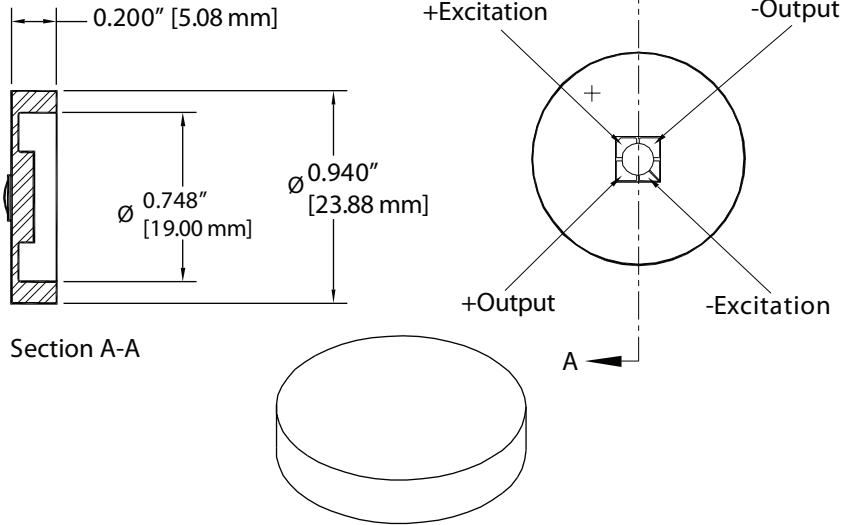
- Pressure Transducer/Transmitter
- Pressure Calibrator
- Process Control
- Hydraulics
- Down-Hole
- Aerospace

Contact Us for more specification options

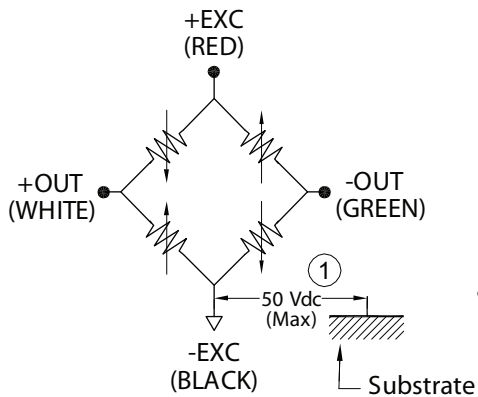
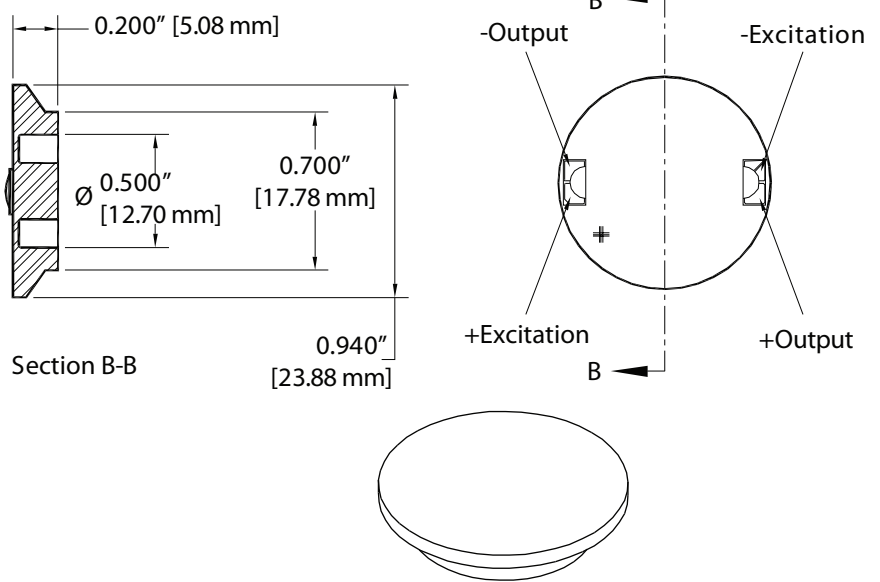


STRAIN MEASUREMENT DEVICES

30 to 500 psi Ranges



1000 to 6000 psi Ranges



① Dielectric Strength up to 500 Vac
Available with CENELEC option

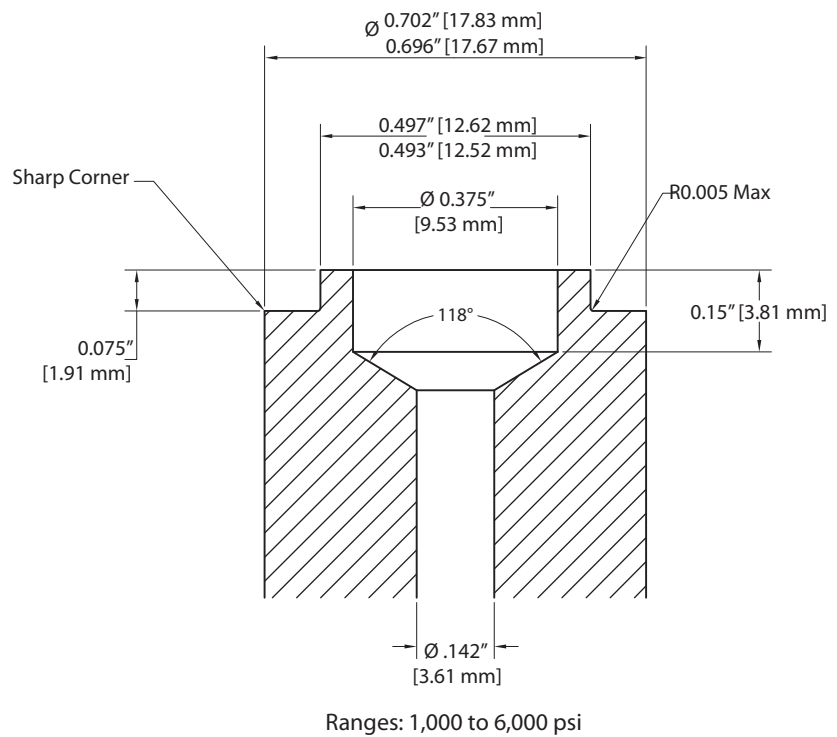
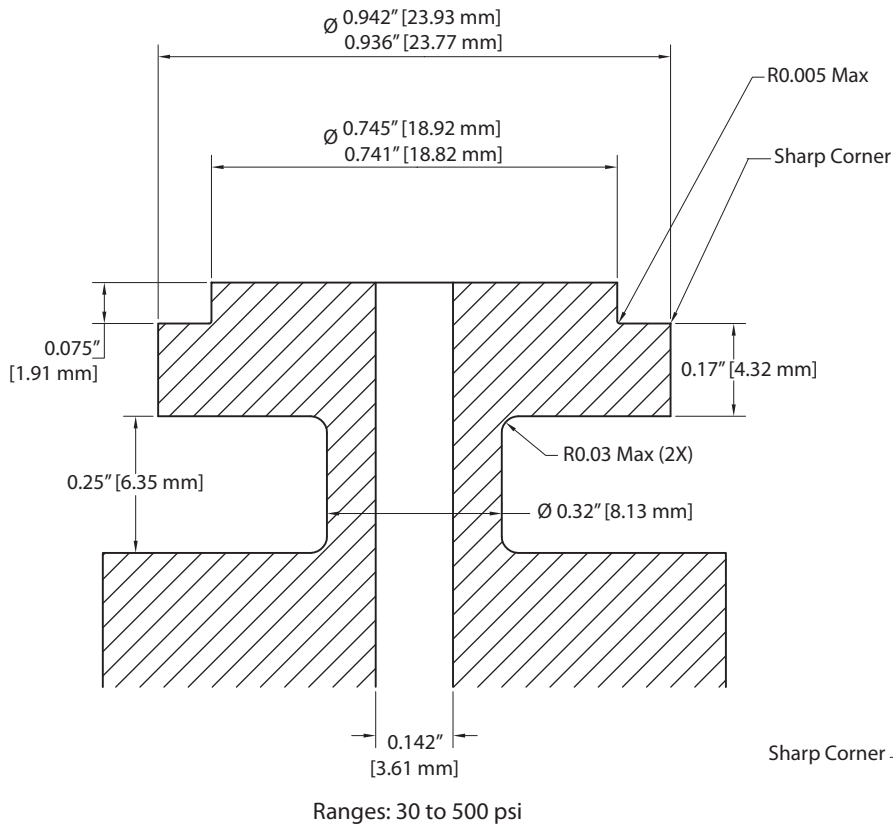
USA
Strain Measurement Devices
55 Barnes Park North, Wallingford, CT 06492
sales@smdsensors.com | (203) 294-5800

Europe
Strain Measurement Devices
Bury Road, Chedburgh, Bury St Edmunds IP29 4UQ
sales@smdsensors.co.uk | +44 (0)1284 852 000

www.smdsensors.com



P940 Mating Part



USA
Strain Measurement Devices
55 Barnes Park North, Wallingford, CT 06492
sales@smdsensors.com | (203) 294-5800

Europe
Strain Measurement Devices
Bury Road, Chedburgh, Bury St Edmunds IP29 4UQ
sales@smdsensors.co.uk | +44 (0)1284 852 000

www.smdsensors.com