

Application

Market: Industrial

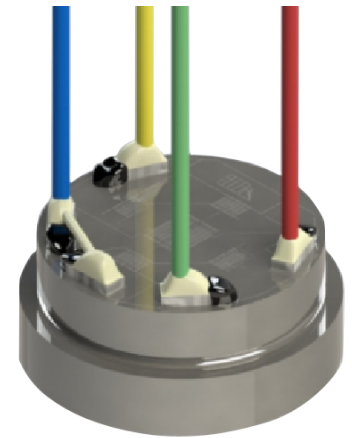
Product Line: Pressure Sensor

Robotic Pressure Sensor

Application: This sensor is used in a hydraulic actuator. Using multiple pressure and force sensors on a closed loop feedback.

Customer Challenge: In need of a custom small sized sensor that is easily mountable, to measure tension and compression while resistant to any side loads.

SMD Sensor Solution: Strain Measurement Devices provided the customer with a customized **B354** hydraulic pressure sensor because of its small size. Designed with additional features like a unique force range of 1KN.



Related Products:

- B472 Pressure Sensor
- P571 Pressure Sensor
- P940 Pressure Diaphragm
- E110 Signal Conditioning Board
- E120 Signal Conditioning Board
- 4000 Panel Meter